



1.102.7.1 The scale of each view or section drawn to other than the predominant scale shall be entered directly below the view or section designation.

1.102.8 Tolerances are to be noted if a general tolerance is applicable.

1.102.9 Reference drawings - all drawings used as a reference (similar to drawing being developed) are to be listed as "REF - Dwg. no.", in the margin below the title block. If a drawing is a second original, modified to create a new part or assembly, the original is to be identified as "M/F - dwg. no." in the same area as REF dwgs. If no drawing is used as reference, signify by "REF - NONE". This is to assist Engineering Checker, Processing, Tooling, Rate Setting Depts. to insure consistency with, or relationship to, previously issued data.

1.102.10 Drawings listed in the Engineering Drawing Schedule are to have the Release Item Number located in the right hand boarder between the bottom of the title block and zone letter A.

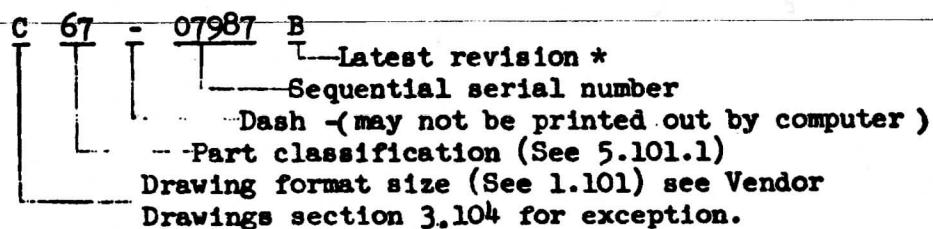
<u>PRESENT</u>	<u>OLD</u>	<u>SIZE</u>
A	F	
B	E	
C	D	
D	B	
E	A	36 x 48
T	T	36 x 8'-12'
STD SECTION	7 x 11	

**5.100 General.**

This section establishes numbering, coding and identification procedures for engineering drawings, associated lists, materials and processes.

**5.101 Drawing and Part Number**

The drawing number consists of the letter designation of the format size, two digit part classification, a dash, followed by a five digit sequential number, and latest revision letter.



- \* Revision letter is used on any written documentation that the drawing does not accompany; on change forms, and on the Engineering Drawing Schedule.

5.101.1 Part Classification Numbers- distinguish parts used in specific areas of the car and assist the Planning and Production Departments to identify and accumulate costs.

STANDARD PART CLASSIFICATION NUMBERS

Body Fabrication

- |   |                                   |
|---|-----------------------------------|
| 01 - End Underframe Weldment,<br>End Castings | 21 - Partitions & Bulkheads       |
| 02 - Posts - Standard                         | 22 - Partitions & Bulkheads -     |
| 03 -  | 23 - Pilot & Pilot Side Sheathing |
| 04 - Posts - Special                          | 24 - Skirts                       |
| 05 - Carlines - Standard                      | 25 - Flooring                     |
| 06 -  | 26 - Roof Parts Misc.             |
| 07 - Carlines - Special                       | 27 -                              |
| 08 - Purlines                                 | 28 - Step & Trap                  |
| 09 - Diagonals                                | 29 - Diaphragm & Side Curtain     |
| 10 - Floor Beams                              | 30 - Miscellaneous Brackets       |
| 11 - Floor Stringers                          | 31 - Couplers                     |
| * 12 - Center Sills                           | 32 - 39 -                         |
| 13 -  | <u>Door Fabrication</u>           |
| 14 - Structural Mldgs. - Straight             | 40 - Outside Doors                |
| 15 -  | 41 - Inside Doors                 |
| 16 - Structural Mldgs. - Curved               | <u>Body Frame Assembly</u>        |
| * 17 - End Frame Parts                        | 42 - General Assembly Drawings    |
| 18 - Gussets - Side Frame                     | 43 - Side Frame Assembly          |
| 19 - Fluted Body Panels                       | + (44) - End Frame Assembly       |
| 20 - Flat Body Panels                         | 45 - Trailer - General Assemblies |

5.101.1 Cont'd.

- |   |  |
|---|--|
| 46 - End Assembly - Special   | 74 - Name Plates                                     |
| 47 - Floor Assembly   | 75 - Lockers   |
| 48 - Roof Assembly  | 76 -   |
| 49 - Belly  | 77 - Mail Compartment & Equipment                    |
| 50 -  | 78 -   |
| 51 - Deadlight Panels   | 79 - Sleeping Car Equipment                          |
| 52 - 58 -   | 80 - Engine and Installation                         |
| <u>Appointments</u>   | 81 - Air Brakes                                      |
| 59 -  | 82 - Hand Brakes                                     |
| 60 - Grab Handles (Hand Holds)  | 83 - Sand Boxes                                      |
| 61 - Buffet or Kitchen  | 84 - Tanks   |
| 62 - Toilet & Washroom Appts.   | 85 - Foundation Brakes                               |
| 63 - Radio  | 86 - Disc Brake & Rolokron                           |
| 64 - Seats & Tables   | 87 - Electrical Systems                              |
| 65 - Bagg. Compt. - all fish racks<br>equip. boxes, stanchions,<br>letter boxes, door guards &<br>floor covering, wrecking tools,<br>fire extinguishers | 88 - Air Conditioning & Ventilation<br>Systems       |
| 66 - Window sash & glass, install.<br>to include drop windows & mech.   | 89 - Heating System                                  |
| 67 - Headlining, Sidelining and   | 90 - Fuel System                                     |
| 68 - Partition lining, interior<br>trim moulding  | 91 - Water Systems - Service - Service &<br>Drinking |
| 69 - Floor Covering   | 92 - Smoke Jacks & Chimneys                          |
| 70 - Curtains, Drapes & Curtain<br>boxes  | 93 - Underfloor Piping & Equipment<br>Arrangement    |
| 71 - Insulation   | 94 - Battery Boxes                                   |
| 72 - Painting   | 95 - 98 -  |
| 73 -  | 99 - Trucks  |

5.104 SK Numbering System

SK numbers are obtained from the Engineering and Reproduction Technician. File cards (form 1700) and charge cards (form ~~3359~~) are prepared in advance by the Technician and are maintained in numerical order along with a log book for recording the numbers. See figs. 5-1, ~~5-2~~

To obtain an SK number, the Draftsman records the next number, the title of the intended drawing, and his name and date in the log book. The corresponding ~~file card and charge card~~ are filled out with the necessary information. **FILE CARD**

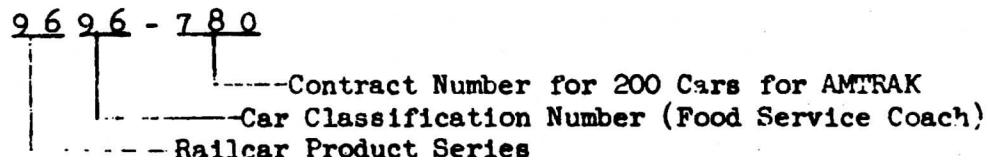
The Technician files <sup>THE</sup> both cards, <sup>UPON</sup> open receipt of the drawing, the charge card is destroyed and the drawing is filed in the vault. A red diagonal on the upper right hand corner is applied same as on part number card.

5.105 Car Classifications

5.105.1 Each car type is designated by a four digit number, the first two digits signify Railway product which in the Budd Co. is 96, or the 9600 series of products. The last two digits signify the type of car, see table 5.105.3

Three digits following the series-car type number separated by a dash, are the numbers assigned by the Planning Dept. in sequence of order receipt, to a contract identifying the customer and the lot of cars being processed as one job thru fabrication (numbers assigned by Budd Co. 1946 thru 1976 are listed in 5.105.4 for reference).

Example:



5.105.1.1 All costs are collected against the contract number.

5.105.1.2 Identical cars released for the same customer at a later date (not as an increased quantity to cars not yet processed thru planning) require a new contract number.

5.105.2 Within one contract of the same car type, seat spacing may be varied on a portion of the lot, due to type of service to which the cars will be assigned; long distance vs short distance is the basic reason. Rather than assign different car type designation, which could cause similar identity identification confusion, the letter "L" for "long distance" is suffixed to the car type number.

5.105.3 Car Classification Numbers

- 01 Baggage Car
- 02 Baggage - Mail (15' apartment)
- 03 Baggage - Tavern
- 04 Parlor - Baggage
- 05 Baggage - Messinger ( express)
- 06 Baggage - Dormitory - Lounge
- 07 Mail - Full Length
- 08 Tavern - Lounge
- 09 Diner - Lounge
- 10 Diner - Full Length
- 11 Baggage Mail ( 30' apartment)
- 12 Passenger - Baggage - Dormitory  
Chair Lounge - Crew - Mail - Dormitory
- 13 Coach  
Coach with Dressing Room (AMTRAK)
- 14 Baggage - Dormitory
- 15 Passenger - Baggage  
Coach - Lounge - Baggage
- 16 Passenger - Mail
- 17 Coach with Hostess Room
- 18 Coach with Conductor's Room
- 19 Coach Tavern  
Long Distance Coach with Snack Bar (AMTRAK)
- 20 Coach - Grille - Dormitory  
Coach - Cafe with Handicapped Provisions (AMTRAK)
- 21 Coach Lounge
- 22 Subway A Car  
N.U. A Car
- 23 Subway B Car  
M.U. B Car
- 24 Diner - Kitchen
- 25 Baggage - Dinette - Lounge
- 26 Cafeteria
- 27 Lunch Counter Diner
- 28 Parlor  
Coach - Snack Bar - Parlor (AMTRAK)
- 29 Lounge
- 30 Dormitory Lounge  
Coach - Pioneer III
- 31 Tavern - Diner
- 32 Observation
- 33 Observation Coach
- 34 Observation Tavern

5.105.3 Cont'd.

- 35 Observation Lounge
- 36 Observation Lounge - Sleeper
- 37 Observation Diner
- 38 Observation Parlor
- 39 Open Section Sleeper
- 40 Roomette
- 41 Bedroom
- 42 Stateroom
- 43 Kitchen - Lounge
- 44 Grill - Diner
- Interior Diner (AMTRAK)
- 45 Coach - Small Lavatories ( same as 13)
- 46 Dome Coach
- 47 Coach Divided
- 48 Coach - Lounge - Tavern - Kitchen - Dinette
- 49 Observation - Tavern - Lounge
- 50 Room Lounge
- 51 Kitchen - Lunch Counter - Lounge
- 52 Dome Parlor - Dwg. Room - Observation
- 53 Baggage Mail ( 60' apartment)
- 54 Baggage - 85'
- 55 Dome Coach - Conductor's space
- Dome Coach - Conference Room
- Coach - Double Deck with Cab
- Kitchen Dorm
- 56 Dome Coach - Women's and children's Section
- 57 Dome - Lounge - Buffet - Dormitory
- 58 Sleeper - Special Arrangement
- Sleeper - Toom - Section
- 59 Dome - Observation - Bedroom - Buffet
- Dome - Observation - Bedroom - Tavern
- 60 Double Bedroom - Cabin Sleeper
- 61 Cabin Sleeper
- 62 Double Bedroom - Cabin Sleeper ( same as 60)
- 63 Double Bedroom - Bar Lounge
- 64 Double Bedroom - Lounge Observation
- Double Bedroom - Bar Observation
- Business Car
- 65 Kitchen Dorm (same as 55)
- 66 Diner ( same as 10)
- Diner with Bar
- 67 Cabin Sleeper (same as 61)
- 68 Double Deck Diner
- Diner - Theater
- High Level Diner

5.105.3 Cont'd.

- 69 Dome Sleeper  
Dome Drawing Room - Cabin
- 70 Double Deck Coach ( without stairs)  
Family Coach  
High Level Chair
- 71 Dome Coach - Observation
- 72 Kitchen - Lunch Counter - Tavern Observation
- 73 Coach - Lounge ( same as 21)
- 74 Kitchen - Lunch Counter - Crew
- 75 Passenger - Baggage - Coach ( same as 15)  
Passenger - Baggage - Lounge ( same as 15)
- 76 Self Propelled - A unit  
Intermediate Coach ( Roger Williams)
- 77 Subway ( same as 22 or 23)  
Suburban Power Coach
- 78 Round End Sleeper  
Double Bedroom - Roomette
- 79 Gallery Car  
Double Deck Coach ( with Stairs)  
Full Dome
- 80 Subway ( same as 22 or 23)  
Suburban Trailer Coach
- 81 RDC - 1 Coach
- 82 RDC - 2 Baggage Coach
- 83 RDC - 3 Mail - Baggage - Coach
- 84 RDC - 4 Mail - Baggage
- 85 RDC Buffet Coach
- 86 RDC Coach - Narrow Gage
- 87 RDC Buffet Coach - Narrow Gage
- 88
- 89 RDC Single Engine
- 90 Sleeper - Multiple Type accommodations
- 91 Siesta Coach
- 92 Head Eng Power
- 93 Self Propelled B Unit  
End Coach (Roger Williams)
- 94 Gas Turbine Self Propelled (RTC)
- 95 Self Propelled Coach ( same as A & B Units)  
Head End Power Coach
- 96 Self Propelled - Snack Bar Coach  
Head End Power - Snack Bar Coach
- 97 Self Propelled - Parlor  
Head End Power - Parlor
- 98 Reconstructed Gallery with Cab
- 99 Reconstructed Gallery without Cab



5.105.3.1 Proposed classification to categorize types and reduce the proliferation of numbers, since the contract number is the real identity.

**PROPOSED CLASSIFICATION**

- 01 Baggage - plus any combination other than mail
- 02 Baggage - mail ( any size apartment)
- 03 Mail - full length
- 04 Mail - plus any other accommodation
- 05 Diner - full length
- 06 Diner - kitchen
- 07 Diner - plus any other accommodations
- 08 Kitchen - plus any other accommodations
- 09 Tavern - any combination
- 10 Lounge
- 11 Lounge - plus any other accommodations
- 12 Double Deck - with cab plus any other accommodations
- 13 Double Deck - without cab plus any other accommodations

**Self Propelled - Electric Group:**

- 80 Subway - A
- 81 Subway - B
- 82 M.U. - A Coach
- 83 M.U. - B Coach
- 84 M.U. - coach and any other accommodations
- 85 M.U. - parlor
  
- 30 - Observation - any type
  
- 40 Sleeper - Roomette
- 41 Sleeper - Bedroom
- 42 Sleeper - Cabins
- 43 Sleeper - Any type rooms - Lounge
- 44 Sleeper - Any type rooms - Bar/Lounge
- 45 Sleeper - Multiple accommodations
- 46 Sleeper - Special arrangement
  
- 50 Dome - Observation plus any other accommodations
- 51 Dome - Sleeper
- 52 Dome - Coach
- 53 Dome - Full- any type accommodations
- 54 Dome - Multi-purpose
- 55 Dome - Coach with conductor room
- 56 Dome - Coach with conference room

5.105.3.1 Cont'd.

- 60 Coach
- 61 Coach - Dressing Room
- 62 Coach - Hostess Room
- 63 Coach - Conductor's Room
- 64 Coach - Food Service
- 65 Coach - Parlor/Lounge
- 66 Coach - Handicap Provisions

Self Propelled - Fossil Fuel

- 70 SPV - Coach
- 71 SPV - Mail - Baggage
- 72 SPV - Mail - Baggage - Coach
- 73 SPV - Coach - Baggage
- 74 SPV - Coach and any other accommodations
- 75 SPV - Special features/or accommodations
  
- 90 Head End Power Car
- 91 Head End Power Car - Coach
- 92 Head End Power Car - Coach and any other accommodations

5.105.4 Contract Nos. assigned 1946 thru 1974. Reference

Example

002 Florida East Coast 12, 13, 24, 34

Contract Number

Railroad

Car Classification Types on Contract

Year Built

Contract Number	Railroad	Car Classification Types on Contract	Year Built
002	Florida East Coast	12, 13, 24, 34	1946, 47
003	Atlantic Coast Line	09, 12, 13, 17, 24, 34	1946, 47
004	New York Central	08, 10, 13, 14, 24, 34, 38, 43, 44	1946, 47, 48
005	Florida East Coast	13, 15, 18, 21, 24, 34	1946, 47, 48
006	Missouri - Pacific	13, 46	1948
007	Minneapolis and St. Louis	13	1948
008	Richmond, Fredericksburg and Potomac	13	1946
008	Atlantic Coast Line	13	1946
009	Seaboard Air Line	14, 24, 34	1947
010	Pennsylvania	13	1947
011	Richmond, Fredericksburg and Potomac	13	1947
012	Central of Georgia	13, 15, 34	1947
013	Atchison, Topeka and Santa Fe	27	1948
015	Chicago, Burlington and Quincy	03, 24, 46, 52, 55	1947, 48
016	Chicago, Burlington and Quincy	02, 53	1948
017	Chesapeake and Ohio	21, 51, 68, 69, 70, 71, 72, 73, 74, 75	1948
019	Chicago, Burlington and Quincy		
020	Denver and Rio Grande Western	01, 24, 39, 46, 55, 56, 57, 58, 59, 60	1948
021	Western Pacific		
023	New York Central	10, 14, 24, 36, 43, 60, 61, 62, 63, 64	1948, 49
024	Pennsylvania	19, 24, 55, 66, 67	1949
025	Pennsylvania	62	1949
026	Seaboard Air Line	62	1949
027	Missouri Pacific	60	1949
028	Pressed Steel Car Co. Ltd. (British Car)	76	1947
029	Delaware, Lackawanna and Western	24, 34	1949
030	Southern	13, 21, 24	1949
031	Pennsylvania	62	1948
032	New York City Board of Transportation	Subway Cars	1949
033	Norfolk and Western	60, 62	1949
034	Missouri Pacific	09, 13	1949
035	Central of Brazil	07, 11, 13, 24, 35, 41, 45, 61, 64	1948, 49
036	Chicago, Burlington and Quincy	28	1949
037	Wabash	09, 25, 46, 52	1949, 50
038	Atchison, Topeka and Santa Fe	60	1949
039	Union Pacific	60	1949
040	Souther Pacific	09, 11, 13, 14, 18, 24, 29, 60, 78	1950
041	Chicago, Burlington and Quincy	79	1950
042	RDC (#2960) Budd Company		1949
043	Sorocabana	01, 13, 24, 41	1951
044	Western Pacific	RDC-2	1950
045	New York Central	RDC-1	1950
046	Chicago and Northwestern	RDC-1, RDC-2	1950

5.105.4 CONT'D.

047	Pennsylvania - Reading Seashore Lines RDC-1	1950
048	Western Pacific RDC-2	1950
049	Baltimore and Ohio RDC-1	1950
101	New York, Susquehanna and Western RDC-1	1950
102	New York Central RDC-1	1950
103	Commonwealth Engineering Co., Ltd. RDC-1	1951
105	Chicago, Burlington and Quincy 64	1952
106	Pennsylvania - Reading Seashore Lines RDC-1	1951
107	Consolidated Railroads of Cuba RDC-1, RDC-2	1951
108	New York, Susquehanna and Western 80	1951
109	New York Central RDC-1	1951
110	Pennsylvania 21, 24, 28, 35, 42, 43, 49, 51, 66	1951, 52
111	New York Central RDC-3	1951
112	Chicago, Burlington and Quincy 11, 13, 24, 39, 41, 52, 57, 58, 59, 60	1952
113	Lehigh Valley RDC-1, RDC-2	1951
114	Consolidated Railroads of Cuba RDC-1	1951
115	Arabian American Oil Co. RDC-2	1951
116	New York Central RDC-1, RDC-2	1951
117	Arabian American Oil Co. RDC-2	1951
118	New York Central RDC-1, RDC-3	1952
119	New York, New Haven and Hartford RDC-1	1952
120	New York, Central RDC-1	1952
121	Boston and Maine RDC-1	1952
122	Boston and Maine RDC-3	1952
123	Atchison, Topeka and Santa Fe RDC-1	1952
124	Duluth, Missabe and Iron Range RDC-3	1952
125	New York, New Haven and Hartford RDC-1	1952
126	Chicago, Burlington and Quincy 79	1953
127	New York, New Haven and Hartford RDC-1, RDC-3	1953
128	New York, New Haven and Hartford RDC-2	1952
129	Atchison, Topeka and Santa Fe 46, 79	1954
130	New York, New Haven and Hartford RDC-1, RDC-3, RDC-4	1953
131	Chicago and Eastern Illinois 13	1953
132	New York Central RDC-1, RDC-3	1953
133	Boston and Maine RDC-1, RDC-3	1953
134	Baltimore and Ohio RDC-1	1953
135	Atchison, Topeka and Santa Fe 01, 05, 07, 13	1953, 54
136	Chicago, Rock Island and Pacific 05, 07	1953, 54
137	Baltimore and Ohio 58	1954
138	Louisville and Nashville 13	1953
139	Atlanta and West Point 13	1953
140	Southern Pacific 13	1954
141	Northern Pacific 46, 69	1954
142	Canadian Pacific 13, 14, 24, 46, 58, 59, 90	1954, 55
144	Chicago, Rock Island and Pacific RDC-3	1953

5.105.4 CONT'D.

145	Baltimore and Ohio RDC-1, RDC-2	1953
146	Atchison, Topeka and Santa Fe 46	1954
148	Boston and Maine RDC-3	1953
149	Canadian Pacific RDC-1, RDC-3	1953
150	Boston and Maine RDC-1	1953
151	Canadian National RDC-3	1953
153	Southern Pacific Equipment RDC-1	1954
154	Northern Pacific RDC-2, RDC-3	1955
155	Great Northern 46, 79	1955
156	Canadian Pacific RDC-1	1954
157	Central Railroad of New Jersey RDC-1	1954
159	Canadian National RDC-1, RDC-4	1954
160	Canadian Pacific RDC-1	1954
161	Boston and Maine RDC-1, RDC-2	1955
162	Canadian National RDC-2	1955
163	Canadian National Rolling Stock Ltd. RDC-1, RDC-4	1955
164	Long Island RDC-1, RDC-2	1955
165	Canadian Pacific RDC-2, RDC-3	1955
166	Atchison, Topeka and Santa Fe 57, 68, 70, 79	1956
167	Chicago, Burlington and Quincy 79	1955
168	Seaboard Airline 58	1955
169	Chicago, Burlington and Quincy 13, 24, 41, 46, 52, 60, 57, 91	1956
170	Pennsylvania 13, 92 (Keystone)	1956
171	Missouri-Pacific 60	1956
172	Saudi Arabia Government RDC-2	1955
173	New York, New Haven and Hartford 76, 93 (Hot Rod RDC)	1957
174	Duluth, South Shore and Atlantic RDC-1	1955
175	Canadian Pacific RDC-1, RDC-2, RDC-4	1955
176	Chicago, Rock Island and Pacific RDC-3	1955
177	Canadian Pacific RDC-1, RDC-3	1955
178	Canadian National Rolling Stock, Ltd. RDC-3	1955
179	Missouri, Kansas, Texas RDC-1	1955
180	Chicago and Eastern Illinois RDC-1	1955
181	Boston and Maine RDC-1	1955
182	Great Northern RDC-3	1956
183	Chicago, Rock Island and Pacific RDC-1, RDC-3	1956
185	Canadian Pacific RDC-2, RDC-3, RDC-4	1956
186	Atchison, Topeka and Santa Fe 64	1957
187	Boston and Maine RDC-1, RDC-2, RDC-9	1956
188	Canadian Pacific RDC-1	1956
189	Northern Pacific RDC-3	1956
190	Pacific Great Eastern RDC-1, RDC-3	1956
191	Minneapolis and St. Louis RDC-4	1957
192	Canadian Pacific RDC-1	1956
193	Baltimore and Ohio RDC-1, RDC-2	1956
194	Estrada De Ferro Santos A Jundiá 13, 18, 77	1957
197	Canadian National RDC-3	1956

5.150.4 CONT'D.

198	Central Railroad of New Jersey RDC-1	1956
199	Canadian Pacific RDC-1	1957
200	Western Railway of Cuba RDC-1, RDC-3	1957
201	Canadian Pacific RDC-1, RDC-2	1957
202	Canadian National RDC-1	1957
203	Canadian Pacific RDC-1, RDC-2	1957
204	Canadian Pacific RDC-1	1957
205	Boston and Maine RDC-1	1957
206	Chicago, Burlington and Quincy 79	1957
207	Canadian National RDC-1, RDC-3, RDC-4	1957
208	Pennsylvania 77 (MU Coach)	1958
209	Atchison, Topeka and Santa Fe 01	1957
120	Northern Pacific 24, 46, 69	1957
211	Baltimore and Ohio 91	1958
212	Canadian Car and Foundry RDC	1957
214	Canadian National RDC-1, RDC-3	1957
215	Canadian Pacific RDC-1	1957
216	Canadian National RDC-2, RDC-3	1957
217	Boston and Maine RDC-2, RDC-3	1958
218	Santos A Jundiai, 13 Interchange Coach	1958
219	Rede Ferroviaria Federal Brazil RDC-1, RDC-2	1958
220	Mkt.-Frankford Elevated Cars 22, 23, 77	1961
221	Sorocabana - Mafersa 13, 14, 24, 41	1960
230	Union Pacific 13	1961
240	Chicago, Milwaukee, St. Paul and Pacific 55, 79	1961
250	Rede Ferroviaria Federal South American RDC Cars	1961
250	Pioneer III (Lightweight Coach)	1957
260	New York Central Conversion from Siesta to Sleeping Coach (.023)	1962
270	Santos a Jundiai 13, 18, 77	1962
280	Pennsylvania and Reading Phila. MU Cars	1963
290	PSIC - Reading RDC Cars	1962
300	ACL Blunt End Observation (Conversion from Round End)	1957
310	Union Pacific 53	1963
320	Atchison, Topeka and Santa Fe 79	1964
330	Pennsylvania (Conversion from Cabin-Sleeping Car)	1964
340	Atchison, Topeka and Santa Fe 07	1964
350	NYCTA R32 Subway Cars (22, 23)	1965
360	Rock Island and Milwaukee 79	
370	CB&Q 55, 79	1964
390	Sorefame Truck Only	1958
440	Four Hi-Speed Test Cars U.S. Dept. of Commerce 77	1966
460	Conversion of 3880 to GT-2 Turbine Test Car	
470	DRPA 22, 23	1968
480	Pennsylvania Electric MU High Speed Cars 95, 96, 97	1968

5.105.4 CONT'D.

520	MTA 22, 23	1969
530	CTA	1969
550	Turbo-Electric Demonstrator (GT-2 Phase 2) Tri-State Trans Comm/MTA	
630	Harlem and Hudson (MTA)	
660	GT 4 Wheels for G.E.	
670	ATA/ATC Eng. Mafersa Metro	1972
680	G.E. - 50 M-1 Cars	1972
690	WSMTD-BN 25 New Gallery 24 REHAB	1972
710	G.E. Gas Turbine Shells (4)	
720	P. C. Repair Metroliner	
730	Milwaukee Gallery	1973
740	AMTRAK - Coach - 46 Cars; Snack Bar - Coach - 11 Cars	1974
750	New Haven Cars for G.E.	1974
760	AMTRAK - Snack Bar Coach (237) Cars	1974
770		
780	AMTRAK Fleet	1975
790	Fepasa Truck Components	1976
810	Rio Metro Trucks	1976
820	Rio Metro Body Engineering	1976
830	RTA Gallery Cars 55, 79	1977
840	Sao Paulo Trucks	1977
850	CVL Rolled & Formed Parts	1977
860	CVL Trucks	1977
9711-273	SPV-2000 Prototype 81	1978
9713-142	Budd Low Cost Car 13	1978
870	ONCF (Morocco)	1978
2001-384	SPV-2000 Engrg. Drawings 81	1978
010	SPV-2000 1st Lot of 14 Cars 81	1978
020	SPV-2000 2nd Lot of 20 Cars 81	1978
880	EMD Locomotive Shells	1978
890	CTA Rapid Transit Cars (2200)	1979
910	RTA Gallery Cabs and Trailers	1979
920	Baltimore/Miami Rapid Transit Cars	1979
930	FRA one SPV 2000)	1979
940	CONN DOT 13 SPV 2000 ) started as -010	1979
950	RTA Gallery Cabs & Trailers	1979
960	AMTRAK Amfleet Cars	1980
970	MTA (SPV)	1981
980	MTA (M-3)	1981
A110	CTA 2600	1981

5.106 Release Item Numbers and Titles

Item numbers are used by the Planning Department to schedule work thru Engineering, Manufacturing Engineering, and Planning. Item numbers identify the same type of release consistently thru all orders.

5.106.1 The order of the drawing titles assigned to the release items is not in any time schedule or manufacturing priority; the association was established at random. Since it has become familiar to all departments, revision into an ordered sequence is not contemplated. The Planning Department's Engineering Drawing Release Schedule" controls the priorities.