



1.102.7.1 The scale of each view or section drawn to other than the predominant scale shall be entered directly below the view or section designation.

1.102.8 Tolerances are to be noted if a general tolerance is applicable.

1.102.9 Reference drawings - all drawings used as a reference (similar to drawing being developed) are to be listed as "REF - Dwg. no.", in the margin below the title block. If a drawing is a second original, modified to create a new part or assembly, the original is to be identified as "M/F - dwg. no." in the same area as REF dwgs. If no drawing is used as reference, signify by "REF - NONE". This is to assist Engineering Checker, Processing, Tooling, Rate Setting Depts. to insure consistency with, or relationship to, previously issued data.

1.102.10 Drawings listed in the Engineering Drawing Schedule are to have the Release Item Number located in the right hand boarder between the bottom of the title block and zone letter A.

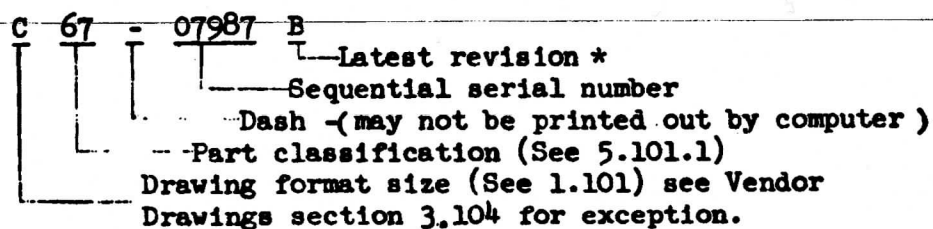
| <u>PRESENT</u> | <u>OLD</u> | <u>SIZE</u> |
|----------------|------------|-------------|
| A | F | |
| B | E | |
| C | D | |
| D | B | |
| E | A | 36 x 48 |
| T | T | 36 x 8'-12' |
| STD SECTION | 7 x 11 | |

5.100 General.

This section establishes numbering, coding and identification procedures for engineering drawings, associated lists, materials and processes.

5.101 Drawing and Part Number

The drawing number consists of the letter designation of the format size, two digit part classification, a dash, followed by a five digit sequential number, and latest revision letter.



- * Revision letter is used on any written documentation that the drawing does not accompany; on change forms, and on the Engineering Drawing Schedule.

5.101.1 Part Classification Numbers- distinguish parts used in specific areas of the car and assist the Planning and Production Departments to identify and accumulate costs.

STANDARD PART CLASSIFICATION NUMBERS

Body Fabrication

- | | |
|-----------------------------------------------|-----------------------------------|
| 01 - End Underframe Weldment, End Castings | 21 - Partitions & Bulkheads |
| 02 - Posts - Standard | 22 - Partitions & Bulkheads - |
| 03 - | 23 - Pilot & Pilot Side Sheathing |
| 04 - Posts - Special | 24 - Skirts |
| 05 - Carlines - Standard | 25 - Flooring |
| 06 - | 26 - Roof Parts Misc. |
| 07 - Carlines - Special | 27 - |
| 08 - Purlines | 28 - Step & Trap |
| 09 - Diagonals | 29 - Diaphragm & Side Curtain |
| 10 - Floor Beams | 30 - Miscellaneous Brackets |
| 11 - Floor Stringers | 31 - Couplers |
| * 12 - Center Sills | 32 - 39 - |
| 13 - | <u>Door Fabrication</u> |
| 14 - Structural Mldgs. - Straight | 40 - Outside Doors |
| 15 - | 41 - Inside Doors |
| 16 - Structural Mldgs. - Curved | <u>Body Frame Assembly</u> |
| * 17 - End Frame Parts | 42 - General Assembly Drawings |
| 18 - Gussets - Side Frame | 43 - Side Frame Assembly |
| 19 - Fluted Body Panels | + (44) - End Frame Assembly |
| 20 - Flat Body Panels | 45 - Trailer - General Assemblies |

5.101.1 Cont'd.

- | | |
|---------------------------------------------------------------------------------------------------------------------------------------------------------|------------------------------------------------------|
| 46 - End Assembly - Special | 74 - Name Plates |
| 47 - Floor Assembly | 75 - Lockers |
| 48 - Roof Assembly | 76 - |
| 49 - Belly | 77 - Mail Compartment & Equipment |
| 50 - | 78 - |
| 51 - Deadlight Panels | 79 - Sleeping Car Equipment |
| 52 - 58 - | 80 - Engine and Installation |
| <u>Appointments</u> | 81 - Air Brakes |
| 59 - | 82 - Hand Brakes |
| 60 - Grab Handles (Hand Holds) | 83 - Sand Boxes |
| 61 - Buffet or Kitchen | 84 - Tanks |
| 62 - Toilet & Washroom Appts. | 85 - Foundation Brakes |
| 63 - Radio | 86 - Disc Brake & Rolokron |
| 64 - Seats & Tables | 87 - Electrical Systems |
| 65 - Bagg. Compt. - all fish racks equip. boxes, stanchions, letter boxes, door guards & floor covering, wrecking tools, fire extinguishers | 88 - Air Conditioning & Ventilation Systems |
| 66 - Window sash & glass, install. to include drop windows & mech. | 89 - Heating System |
| 67 - Headlining, Sidelining and | 90 - Fuel System |
| 68 - Partition lining, interior trim moulding | 91 - Water Systems - Service - Service & Drinking |
| 69 - Floor Covering | 92 - Smoke Jacks & Chimneys |
| 70 - Curtains, Drapes & Curtain boxes | 93 - Underfloor Piping & Equipment Arrangement |
| 71 - Insulation | 94 - Battery Boxes |
| 72 - Painting | 95 - 98 - |
| 73 - | 99 - Trucks |