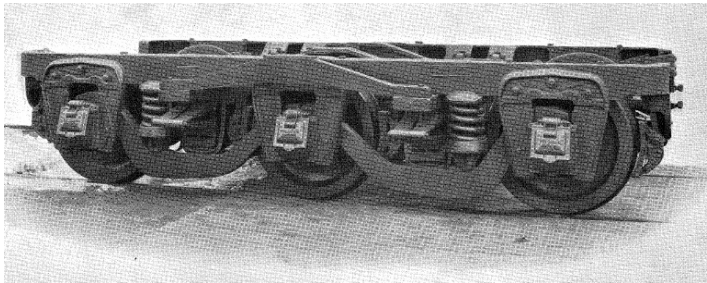


HO Passenger Car Trucks Visual Index –Version 3.0

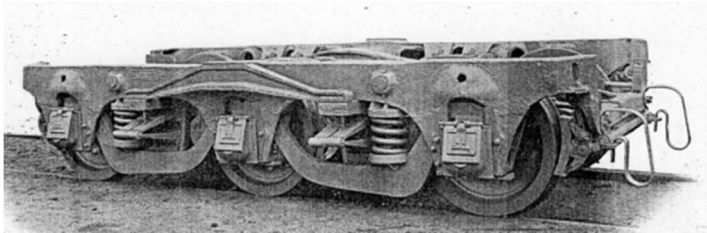
2411



Pullman Photo P37899 – Pullman Library Collection

6 Wheel – Drop equalizers – 11’ – 0” wheel base Clasp brakes (two brake shoes per wheel.) Similar truck to 2410-A except longer wheel base.

2426 or 2411-A



From the Pullman Truck Catalog Document

6 Wheel – Drop equalizers – 11’ – 0” wheel base Clasp brakes (two brake shoes per wheel.) Pedestal cast integral with truck frame.

When Pullman customers began to purchase retro-fit drop equalizers from Commonwealth Steel, Pullman answered with a version of their own, originally known as 2426, rebuilding type 242 trucks, also called 2411-A



Walther's 920-2204

/2411/61-Q-9



Central Valley Truck T-21

/2411/61-Q-9



Cape Line T-71, Bethlehem Car Works 1271  
(Sold to LaBelle)

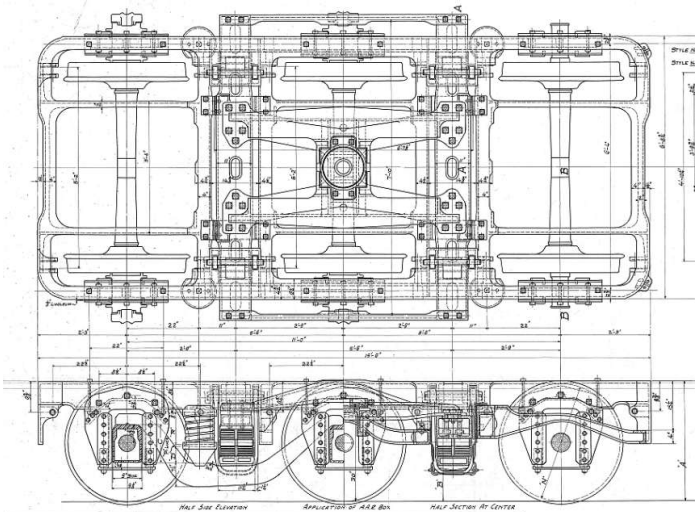
/2411-A/61 or 61-N



Central Valley Truck T-22

/2411-A/61 or 61-N

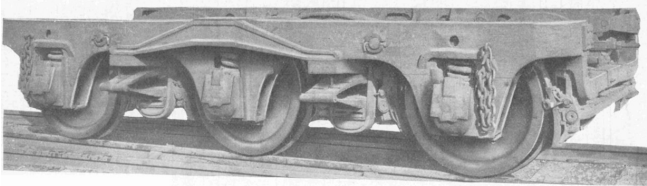
Typical Drawing



Pullman Drawing  
44-H-57

HO Passenger Car Trucks Visual Index –Version 3.0

242



6 Wheel – Pivoted equalizers – 11” – 0” wheel base – clasp brakes (two brake shoes per wheel.) Pedestals cast integral with truck frame. 4” width bolster springs.

242-A – Same as 242 except uses 4 ½ “width bolster springs.



Note: The 242-A truck has two holes in the side frame above the journals, while the 242 has a single one.



Walther's 920-2202

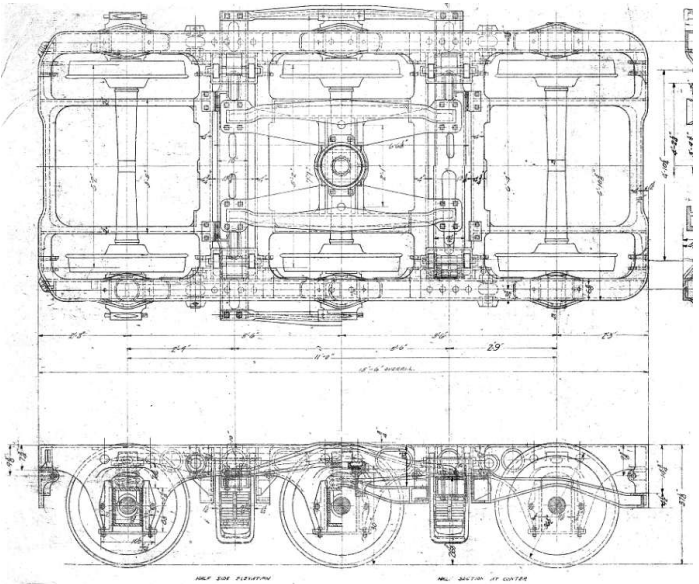
/242-A/61-EI-9



Bethlehem Car Works (Branchline) 50002

/242-A/61-EI

Typical Drawing



Pullman Drawing  
5-H-72 (242)  
11-H-20 (242-A)